



SMOKEJET

Universal Louvre Ventilator



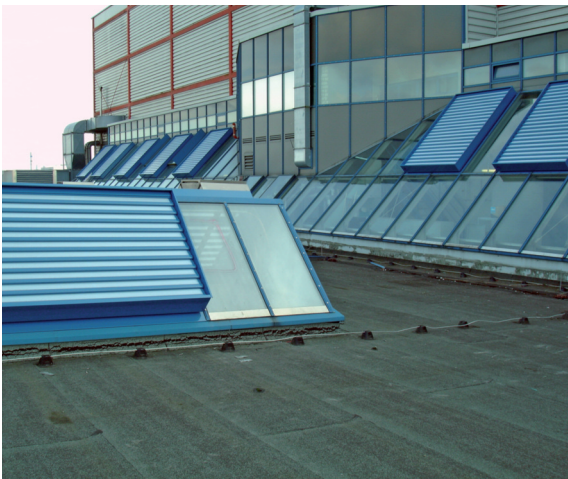
The universal louvre ventilator SMOKEJET is being installed in industrial, commercial and community buildings. Due to its great stability, its low weight and the extensive possibilities of application, the SMOKEJET is always appreciated by architects and builders.

HOW IT WORKS:

The SMOKEJET venting and natural smoke extraction system uses the thermal lift in buildings which arises from air pressure and the equivalent difference in temperature for both natural venting and natural smoke extraction in case of fire.

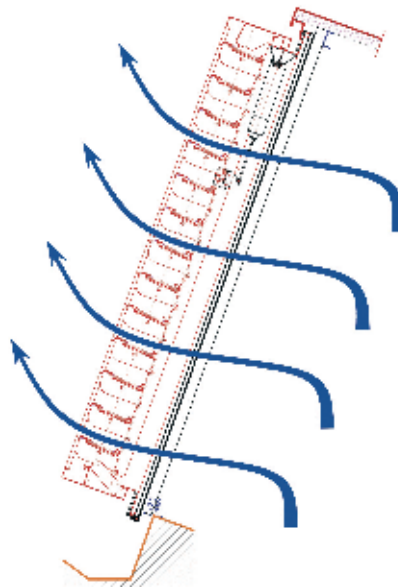
Weather-dependent daily ventilation is provided by an automatic rain sensor.

In case of fire SMOKEJET opens automatically due to the developing heat or smoke alarm.



SMOKEJET BENEFITS:

- ↪ Natural smoke and heat extraction (NSHE)
- ↪ Day-to-day ventilation
- ↪ Natural daylight
- ↪ Energy conservation
- ↪ Suitable for all customary roof and wall construction types



FUNCTION:

SMOKEJET is a naturally efficient venting and smoke extraction unit, mainly comprising of an aluminium frame construction and an equivalent number of adjustable louvres, depending on installation size.

The louvres are controlled via pneumatic cylinders or an electric motor.

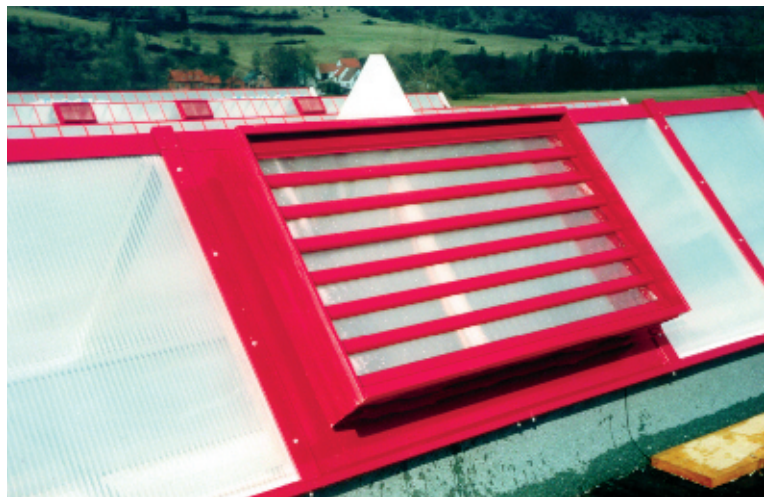
Apart from numerous options for roof installation, SMOKEJET can also be integrated into any wall construction as an air inlet system.

NATURAL SMOKE EXTRACTION (NSE)

Nowadays more and more plastic and other materials are used, which release toxic gases during the burning process. These toxic gases as well as smoke and heat disperse throughout the building and constrain the active fire fighting operations, thus risking people not being quickly enough evacuated from the place of danger.



SMOKEJET in vertical glazing



SMOKEJET integrated into the continuous roof light system DELTALIGHT by roda

SMOKEJET

FIRE PROTECTION FOR YOUR SAFETY



SMOKEJET integrated in shed-roof glazing

The SMOKEJET is equipped with an automatic thermal release mechanism.

In the event of fire, when reaching the release temperature SMOKEJET opens independently from all other functions. SMOKEJET acts upon alarm impulses from both smoke detectors and the central fire alarm system.

NATURAL VENTILATION

Especially during the summer month industrial production halls often have to suffer production downtimes due to heat load and used bad air.

SMOKEJET uses the thermal lift in the building and provides a no-cost and noiseless ventilation without any additional energy input by simply deploying the prevailing difference in temperature. The effectiveness of ventilation rises proportionally to the thermal load. Therefore, natural ventilation regulates itself utilizing the difference in temperature – wholly without any additional adjustment control.

SMOKEJET

Even in a closed position natural daylight enters the building due to the transparent louvre blades. This saves energy costs for artificial lighting and has a positive motivation effect on employees.

SMOKEJET'S active contribution to energy conservation assists the amortisation of the plant.



SMOKEJET in vertical glazing

The energy factor plays an important role particularly for industrial companies. Especially during the winter leakage leads to large heat losses, if ventilators are not tight. This is why seal-brushes fitted on the louvres and the unit frames keep the heat loss at a minimum when the unit is closed.

THE SOLUTION - FOR „COOL CALCULATORS“



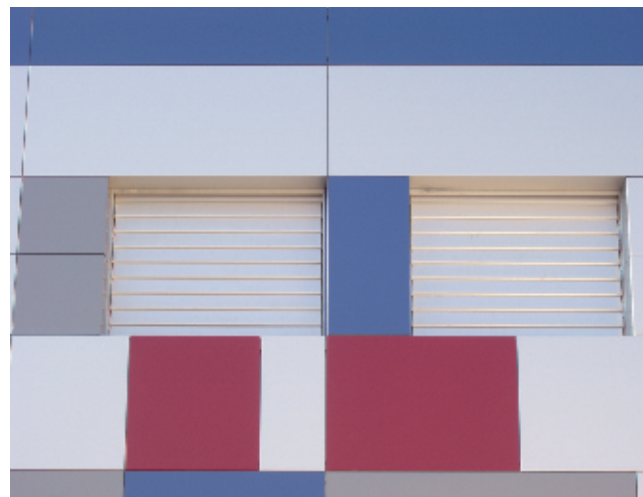
SMOKEJET integrated into a shed-roof glazing

SMOKEJET-THE SMOKE AND HEAT EXTRACTOR (SHE) AS A WALL UNIT OR AN AIR INLET LOUVRE SYSTEM

SMOKEJET can also be integrated into any wall construction, because without an equivalent air inlet the all-over ventilation is non-existent or rather poor. The most effective place for the air to be let in is always the lower wall area both in case of fire and for ventilation purposes. In case of emergency SMOKEJET makes the extraction of fumes more effective by letting fresh air streaming in. At the same time the materials situated close to the fire are cooled down by the air stream of inlet air.



SMOKEJET as an air-inlet louvre



SMOKEJET in a wall construction



Air-inlet louvre SMOKEJET with splitter-attenuator



Air-inlet louvre SMOKEJET integrated into a wall construction

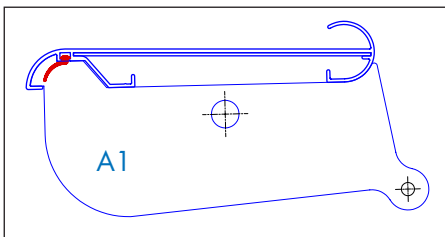


SMOKEJET integrated into polycarbonate glazing

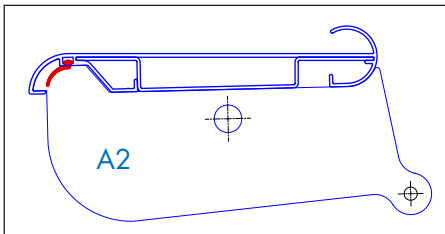
LOUVRE TYPES

SMOKEJET is made from corrosion resistant aluminium alloy AlMg³ and AlMgSi_{0,5}.

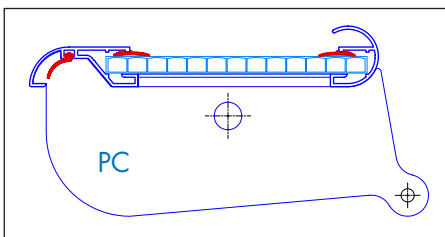
The following types of louvres are available subject to their application area.



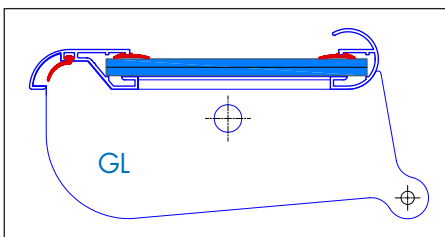
A1
Single-skinned aluminium louvre



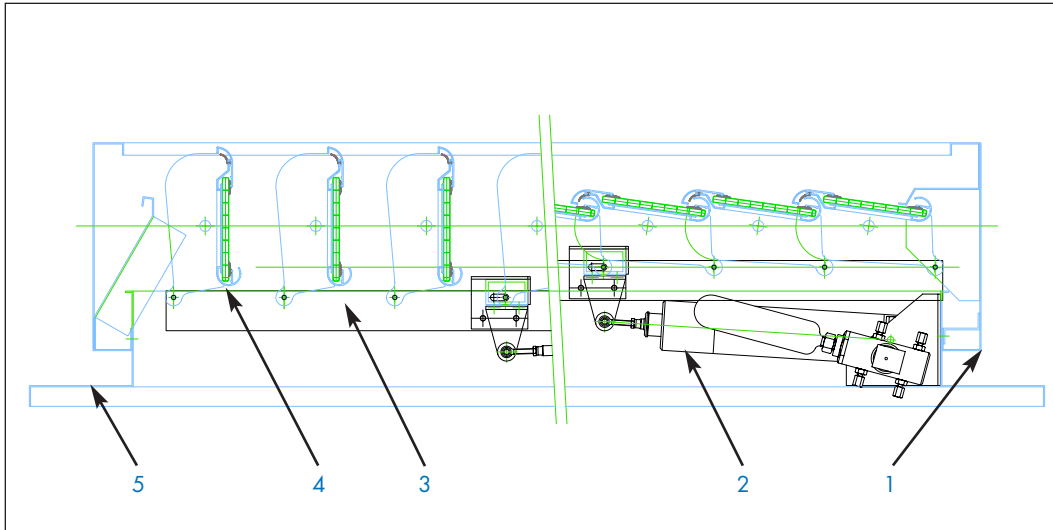
A2
Double-skinned aluminium louvre



PC
Polycarbonate louvre



GL
Glass louvre (VSG)



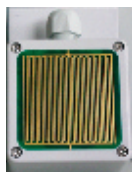
1. Circumferential base profile
2. Pneumatic locking cylinder
3. Connecting rod
4. Louvre
5. Unit flange

SMOKEJET

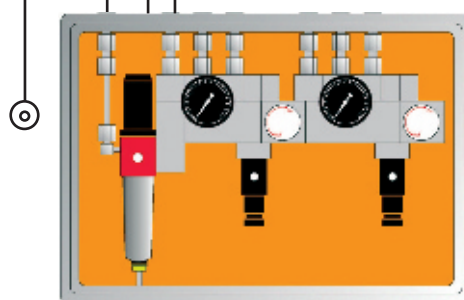
ADVANTAGES IN DETAIL



The rain sensor provides weatherproof ventilation. The louvres close automatically when rain is detected.



Rain detector system comprising of rain sensor and interpretation set.



Pneumatic switchboard for open / close control of universal louvres. Including wiring facilities for rain sensor automatic and fire alarm box.



SMOKEJET in shed roof glazing

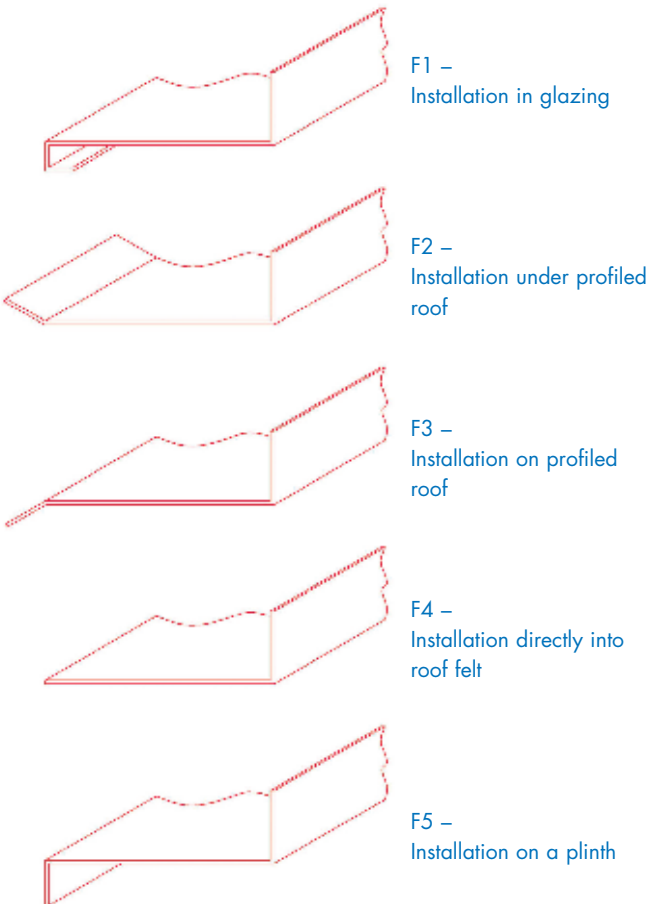
INSTALLATION

Due to its low weight as well as the adapted dimensions and flange versions SMOKEJET can be easily installed into any customary kind of roof and wall construction.

SMOKEJET

VERSATILE AND RELIABLE

FLANGE VERSIONS:



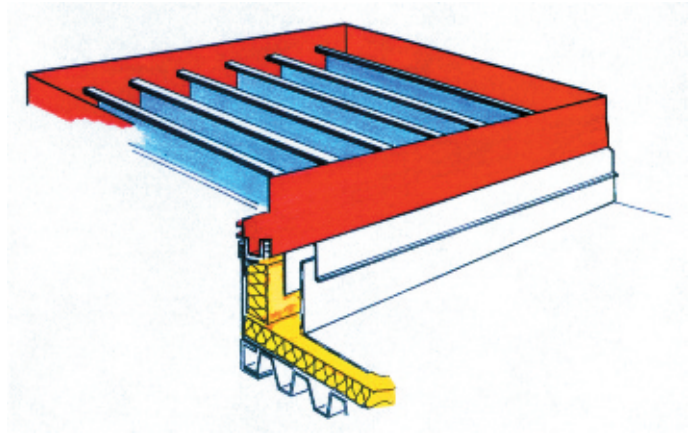
SMOKEJET in shed roof glazing



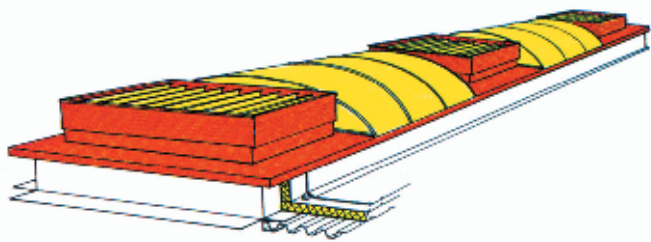
SMOKEJET in polycarbonate shed roof glazing



SMOKEJET on a flat roof with insulated top frame. The unit flange is prepared for installation onto a plinth (F5)



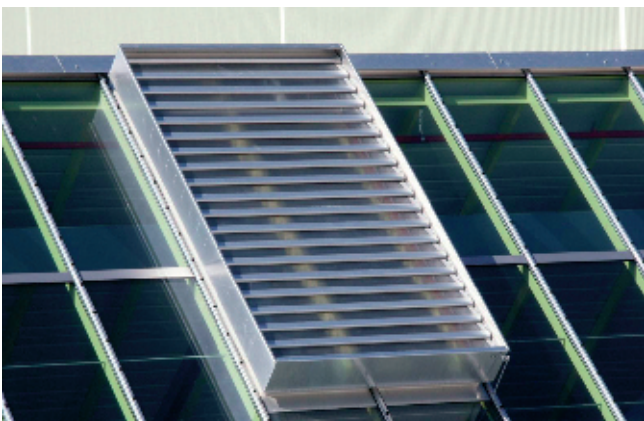
Installation detail – SMOKEJET installed onto a thermal insulated metal top frame in a flat roof



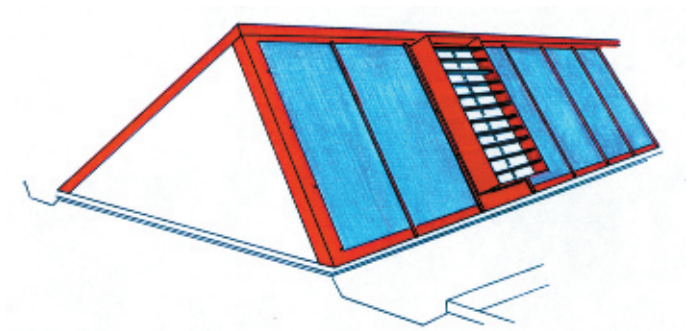
Installation detail – SMOKEJET installed in a roof light integrated on a thermal insulated frame



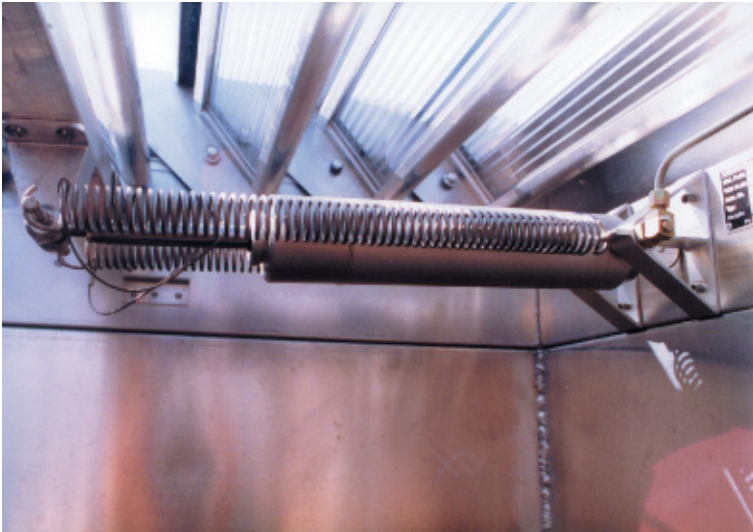
SMOKEJET integrated into the EUROLIGHT continuous roof light system with polycarbonate louvers
The unit flange is prepared for installation onto a plinth (F5)



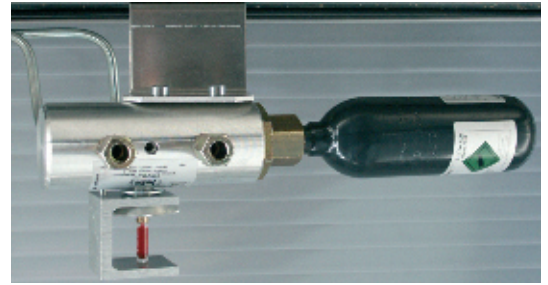
SMOKEJET in shed roof glazing
The unit flange is prepared for installation onto a plinth (F5)



Installation detail – SMOKEJET in a triangular roof light



Pneumatic air cylinder for a single-line principle of operation.



Thermal priority valve with CO₂ ampoule for an automatic triggering in the event of a fire.

Standard unit sizes (F5)

Geometric installation area and effective area

System type SMOKEJET in mm =	Unit dimensions		Flange dimensions	
	Width B	Length L	Width C	Length D
JA 05-0607	576	705	829	958
JA 07-0610	576	971	829	1224
JA 09-0612	576	1237	829	1490
JA 11-0615	576	1503	829	1756
JA 13-0618	576	1769	829	2022
JA 15-0620	576	2035	829	2288
JA 17-0623	576	2301	829	2554
JA 19-0626	576	2567	829	2820
JA 22-0630	576	2966	829	3219
JA 05-0707	726	705	979	958
JA 07-0710	726	971	979	1224
JA 09-0712	726	1237	979	1490
JA 11-0715	726	1503	979	1756
JA 13-0718	726	1769	979	2022
JA 15-0720	726	2035	979	2288
JA 17-0723	726	2301	979	2554
JA 19-0726	726	2567	979	2820
JA 22-0730	726	2966	979	3219
JA 05-1007	1026	705	1279	958
JA 07-1010	1026	971	1279	1224
JA 09-1012	1026	1237	1279	1490
JA 11-1015	1026	1503	1279	1756
JA 13-1018	1026	1769	1279	2022
JA 15-1020	1026	2035	1279	2288
JA 17-1023	1026	2301	1279	2554
JA 19-1026	1026	2567	1279	2820
JA 22-1030	1026	2966	1279	3219
JA 05-1307	1326	705	1579	958
JA 07-1310	1326	971	1579	1224
JA 09-1312	1326	1237	1579	1490
JA 11-1315	1326	1503	1579	1756
JA 13-1318	1326	1769	1579	2022
JA 15-1320	1326	2035	1579	2288
JA 17-1323	1326	2301	1579	2554
JA 19-1326	1326	2567	1579	2820
JA 22-1330	1326	2966	1579	3219
JA 05-1607	1626	705	1879	958
JA 07-1610	1626	971	1879	1224
JA 09-1612	1626	1237	1879	1490
JA 11-1615	1626	1503	1879	1756
JA 13-1618	1626	1769	1879	2022
JA 15-1620	1626	2035	1879	2288
JA 17-1623	1626	2301	1879	2554
JA 19-1626	1626	2567	1879	2820
JA 22-1630	1626	2966	1879	3219
JA 05-1907	1926	705	2179	958
JA 07-1910	1926	971	2179	1224
JA 09-1912	1926	1237	2179	1490
JA 11-1915	1926	1503	2179	1756
JA 13-1918	1926	1769	2179	2022
JA 15-1920	1926	2035	2179	2288
JA 17-1923	1926	2301	2179	2554
JA 19-1926	1926	2567	2179	2820
JA 22-1930	1926	2966	2179	3219

Version with 350 mm vertical plinth

TECHNICAL SPECIFICATIONS



SHE-Box with nickel-cadmium batteries granting an emergency power supply in case of SHE-triggering due to heat or smoke.

Depending on the complexity of application and location, there is a choice of different unit versions. All SMOKEJETS comply with the requirements of the DIN EN 12101-2 standard and the Germany fire safety standard VdS 2159.



SMOKEJET double units in northlight glazing for ventilation purposes



SMOKEJET



SMOKEJET in a DELTAUGHT polycarbonate roof light by roda as SHE and ventilation unit

The ventilation and natural smoke and heat extraction system SMOKEJET provides a powerful, no energy consuming aeration by exploiting the natural air flow and meets the requirements of preventing fire protection as per the DIN EN 12101-2 standard and the German fire safety standard VdS 2159.

The construction is designed as a maintenance free, compact and lightweight unit. A multi-channel drainage system and the shingle-type overlapping of the louvres with additional chamfers guarantee an absolute rain-tightness.

The ventilator side panels are reinforced by inner longitudinal sections. The unit is made from corrosion resistant aluminium alloy AlMg³.

The louvres are controlled by a pneumatic air cylinder fitted with a special permanent lubricant or by electric motor.

In the event of fire the thermal release system triggers automatically and independent from every other control mechanism.

The louvres can be made from either glass, polycarbonate or aluminium.

Due to the variable unit dimensions and the adapted flange range, SMOKEJET can be easily installed into all customary roof and wall constructions.

SPECIFICATION

Geometric free area: _____ m²

Aerodynamic free area: _____ m²

Weight: _____ kg

Triggering temperature: _____ °C

Roof opening length: _____ mm

Roof opening width: _____ mm

Flange length: _____ mm

Flange width: _____ mm



WITH US YOU'RE IN GOOD COMPANY



Nr. S 800074

Zertifiziert
nach
DIN EN ISO
9001



MPA - Geprüft nach:
DIN EN 12101 - 2
Bauproduktengesetz
89 / 106 / EWG
Registrier - Nr.
0432 - BPR - 210003805

★ VdS-anerkannte Errichterfirma für
Rauch- und Wärmeabzugsanlagen

If you would like
to find out
more about us,
please simply
get in touch.
We'll be happy
to help.

